

MOBSTORE USER MANUAL FOR SMARTPHONE
WINDOWS MOBILE 5.0 DEVICES
TABLE OF CONTENTS

1.0 INTRODUCTION	2
<i>1.1 Scope.....</i>	<i>2</i>
<i>1.2 Physical Environment.....</i>	<i>2</i>
<i>1.3 Installation.....</i>	<i>3</i>
2.0 USAGE.....	4
<i>2.1 Main screen.....</i>	<i>4</i>
<i>2.1.1 Start Server.....</i>	<i>6</i>
<i>2.1.2 Backup</i>	<i>10</i>
<i>2.1.4 Restore</i>	<i>16</i>
<i>2.1.5 Uninstalation</i>	<i>21</i>
<i>2.1.6 History</i>	<i>22</i>
<i>2.1.7 About Us</i>	<i>23</i>

1.0 Introduction

1.1 Scope

"MobStore" provides the user the functionality of being able to take **Backup** of his/her device data to another device running the same application. Along with the backup functionality, the user can also **restore** data from any backup available at the server end. It is not necessary that the user has to restore only his backup data but infact can restore any of the available backups at the server end. This functionality is provided over **three wireless transports like Bluetooth, InfraRed(IR) and WLAN.**

Data items which can be backed up or restored include **"Contacts", "Calendar", "Tasks and Appointments", "CallLogs", "Emails(with attachments)", "Phone SMS" and "Multimedia content which includes image and video files".**

1.2 Physical Environment

Hardware : Windows Mobile 5.0 Phone Edition Smartphone devices supporting Bluetooth, IR and WLAN.

Software : Windows CE 5.0 OS, Windows Mobile 5.0 PocketPC SDK, Visual Studio 2005 IDE, ActiveSync 4.1

1.3 Installation

- 1) **MobStoreSP.CAB** file provided to you will do the required installation. Transfer the cab file to **Smartphone 5.0** Phone Edition device. For this you need to be connected to the desktop pc using **Microsoft ActiveSync 4.1**. For this you can use **USB port / IR / Bluetooth** connection. Once connected just drag & drop the file to the device or just copy the file to the device.
- 2) Now click on the CAB file on the device. During first installation the application will ask you to enter the security code which the user is provided with, via mail, after successful registration.



Fig 1: Entering security code dialog box.

- 3) If the correct security code is entered, the CAB will install all the components of Backup-Restore application. The application will be installed in the "Program Files" folder. The components installed will be "**MobStore.exe**", "**BCKRESTL.dll**" and "**MobStore.htm**". If the correct security code is not entered installation fails.
- 4) Security code will be asked only if the user is installing the application for the first time. If the application components is still in the device and the user tries installing again, security code would not be asked but the previous installation components and data will be deleted and the application components will be installed again. But again installation succeeds only for the registered IMEI number devices.
- 5) In the application, the user has the option of uninstalling the application. Uninstalling the application means all application data will be lost ie if the application was used as a server and if any client had taken backup, the contents will be lost.

After uninstalling, if the user installs the application again, this time again the security code needs to be entered.

2.0 USAGE

Launch the application by clicking on “**MobStore.exe**” available in the path “**\\Program Files\\MobStore**”.

This application can be used either as a server or as a client at a time. If the application is being used as a server, it cannot be used as a client till the server is stopped. The user can use the client/server over any of the three communication mediums ie **InfraRed(IR)**, **Bluetooth** and **WLAN**. As a server only 3 simultaneous connections is supported.

2.1 Main screen



Fig 1: Main Screen

On the main screen a menu “Options” is provided with the following options:

- ❖ Start Server
- ❖ Backup
- ❖ Restore
- ❖ History



Fig 2: Menu options

The user can select any of the options to move ahead.

Also there is another menu for general purposes like "About Us", "Help", "Exit" etc. Each of the options is explained in more details further below.



Fig 3: Menu options

2.1.1 Start Server

Upon clicking on menu option "Start Server", a dialog will open up with various transport options like "Bluetooth", "InfraRed", and "WLAN".



Fig 1: Transport selection dialog.

Note: GPRS is also provided as an option but it is not implemented currently in this release.

Select the desired transport type for which the server would be started. Click "Next", the user will be prompted to verify about starting the server, the user should say "yes" to go ahead or "no" to cancel the operation.

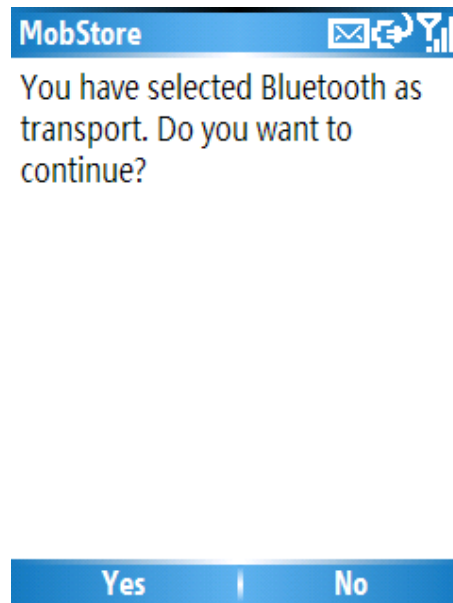


Fig 2: Verification message about starting server.

If the user chooses to go ahead, a dialog with server details dialog will appear providing details about each of the clients connected. The user can view the connection details and also the logs related to each session.

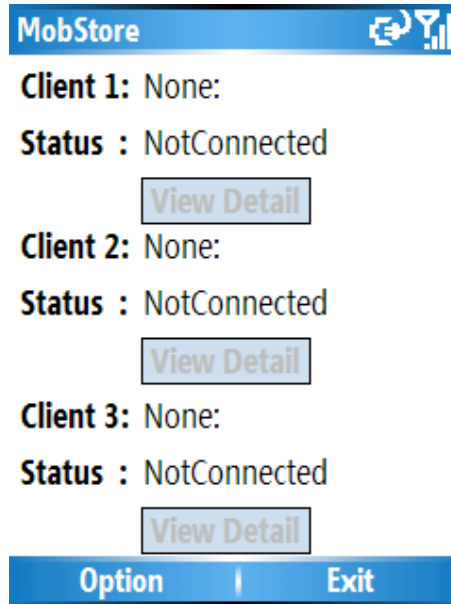


Fig 3: Server details dialog.

“View Details” button is provided which the user can click to find the details of the operations in progress for the corresponding client. On this dialog the user can click “Back” from the menu option to go back to the server details dialog. “View Details” button will be enabled only when a client connection exists.

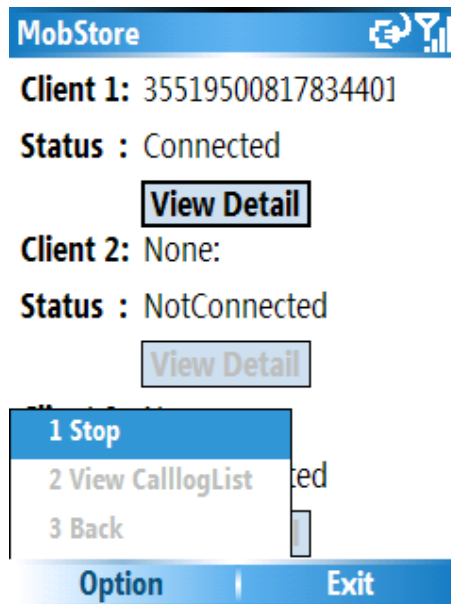


Fig 4: Back menu option

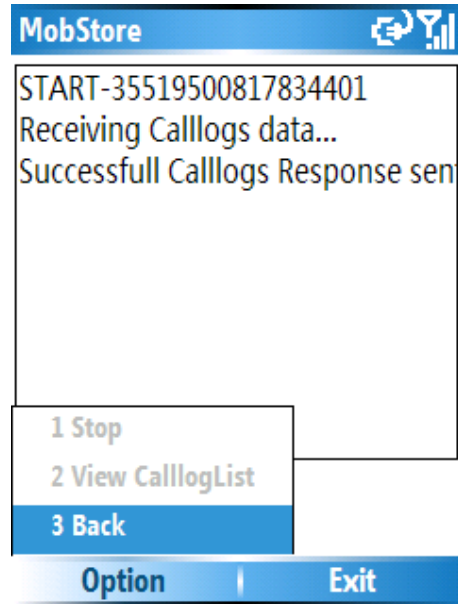


Fig 5: Logs when clicked on "View Details"

On the same dialog , a menu is provided wherein the user can "Stop" the server. Stopping the server would mean disconnecting all the connected clients and proper cleaning up of the session before terminating hence this operation would take some time.

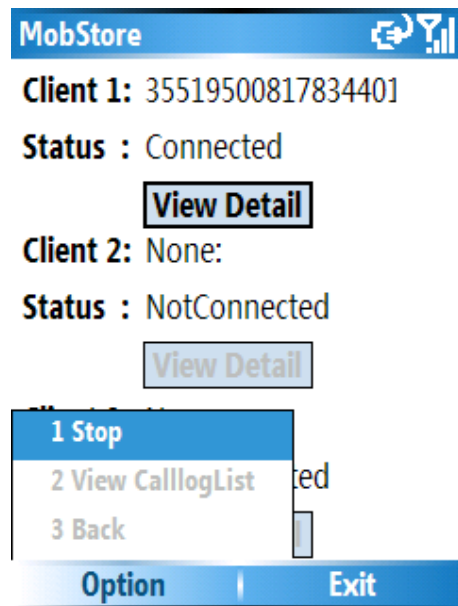


Fig 5: Stop Server menu option

Whenever an connection request will be received from the client, the user at the server end will be prompted about the connection. The user at the server end has the right to accept the connection or not. If the user at the server end does not accept the connection, appropriate message will be sent to the user at the client end about connection being refused.

Note : The server supports maximum three simultaneous connections. The server can be started over any one of the communication mediums at a time. For example if the user has started the server for Bluetooth, he cannot start the server over any other communication medium till he stops the first started session.



Alert

Device -
35519500817834401wants to
connect.Accept Connection?



Yes



No

Fig 6: Authentication request

2.1.2 Backup

If the user decides to use the backup functionality, it means the application will currently act as the client. Therefore for backup to be successful the user needs to make sure that the server is running for some transport medium and later the client can connect to the server over the same communication medium over which the server is running.

Backup module basically allows the user to take backup of his data on another device running the same application. The items which can be backup up are "Contacts", "Calendar", "Tasks and appointments", "Call Logs", "Emails(with attachments)", "Phone SMS" and Multimedia files which include image and video files.

Note : If the contents being backup up are larger in size , it will take appropriate time for backup to be completed. And also it would depend upon the memory availability and device capabilities at the destination end. Also the device **phone capabilities should be "ON"** so that the IMEI number of the device can be retrieved.

To initiate backup procedure, a menu option is provided in the main menu labelled as "Backup".



Fig 1 : Menu option "Backup"

The next screen would provide the list of all items which can be backed up. Items which can be backed up are "**Contacts**", "**Calendar**", "**Tasks and appointments**", "**Call Logs**", "**Emails(with attachment)**", "**Phone SMS**" and **multimedia files which include image and video files**.

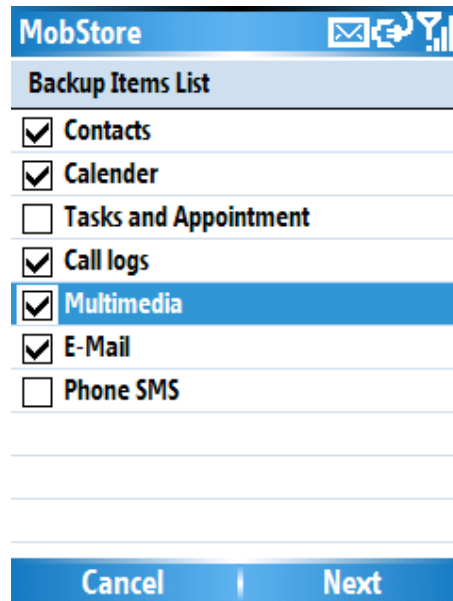


Fig 2: List of Items which can be backup up.

If the user wants to back up "Multimedia" contents which includes image and video files, an explorer will be provided to select the files.

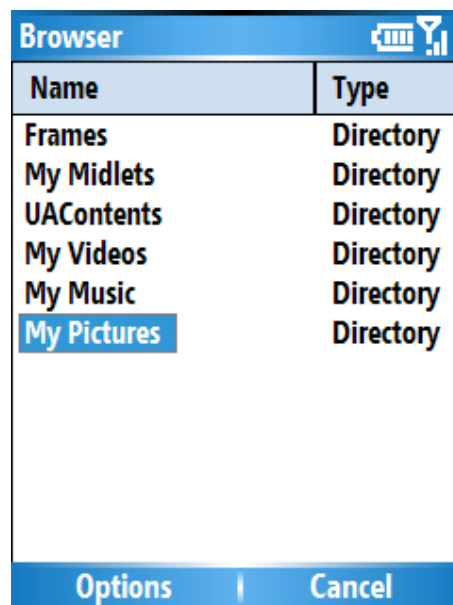


Fig 3 : Explorer

The user can then select the files as shown in the figure below:

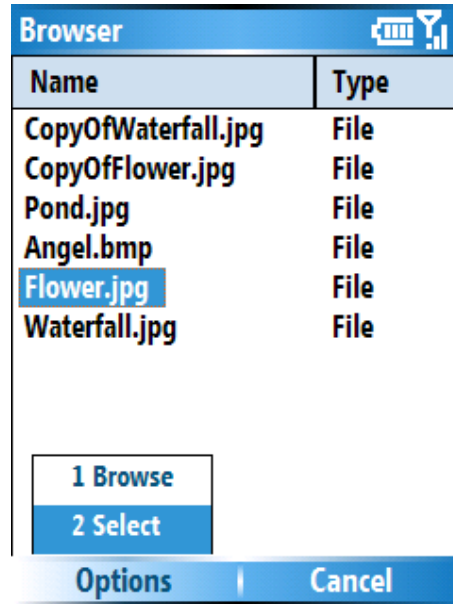


Fig 4: Files available in selected path

Selected files will be displayed in a list:

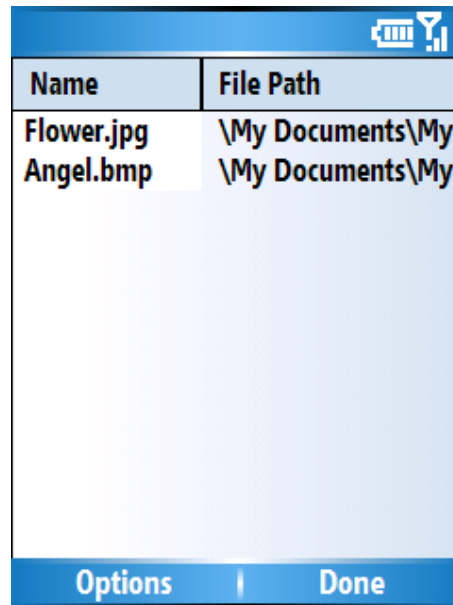


Fig 5: Selected files list

Once all data has been read and the application is ready to transfer the data, a dialog is provided to select the medium of communication over which backup would be taken. One point to be noted is that the server at the destination end (target device) should also be started in the same communication medium.



Fig 6: Select type of transport.

In case of Bluetooth and InfraRed selection, a list of devices will be displayed for the user to select from, in case of InfraRed, it will be only one device but in case of bluetooth , all devices in range will be displayed. The user can select the device to which connection is to be established. Connection will be established and at the server end it will be authenticated. If the user at the server end refuses the connection, appropriate message about connection refuse will be given to the user at the client end.

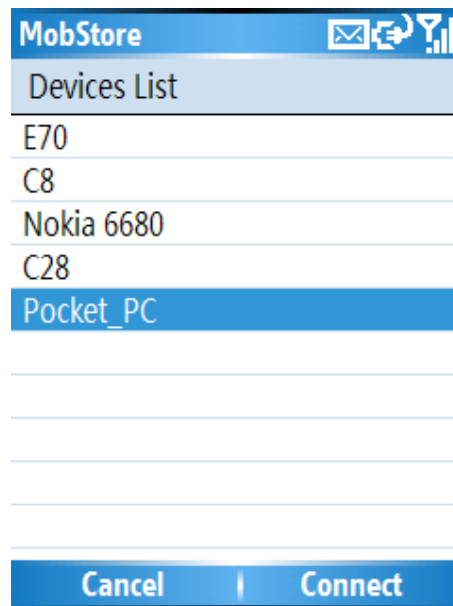


Fig 7: Bluetooth device list

If the medium of transport selected is WLAN, at the client end, a dialog box appears wherein the user enters the ip address of the destination device. Both client and server should be connected to LAN. **The port no assigned to this application is 5500.** The server is listening on this port and hence the client needs to connect to this port.

IP Address :


Port Number :

Cancel | Connect

Fig 8: WLAN dialog box (IP Address and port number).

After connection has been established and authenticated from the server end, the backup process begins. A progress bar will be displayed notifying the user about the backup progress in steps. In case of any kind of error, appropriate message will be flashed to the user.





Authenticating...Please wait.

Option | Exit

Fig 9: Authenticating

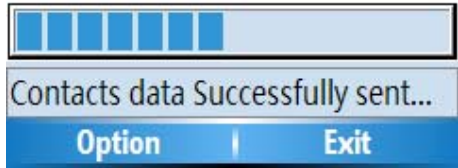


Fig 9: Progress display

At the server end , if the backup has been successfully taken, a folder with client IMEI number will be created and the backup contents will be saved in an folder with the date and time stamp as name of the folder within the IMEI folder.

2.1.4 Restore

Restore enables the user to restore any of the backup contents if any was taken. Backup should be available at the destination end for restore being possible. To perform restore operation, its not necessary that first backup has to be taken.

In case of restore , first step is to connect to the device from which backup is to be restored. Therefore, first the user needs to start the server on the device in which backup's are available.

From the client device ie the device on which data is to be restored, click on "Restore" option in the menu provided.



Fig 1: Restore menu option.

After clicking on "Restore" menu option, a dialog box will appear with all available transports for connection. Available transports are "Bluetooth", "InfraRed" and "WLAN". The user should select the same transport as the server is running on. The next screen would display all devices in range. In case of InfraRed, only one device will be displayed and in case of bluetooth all devices in range will be displayed.

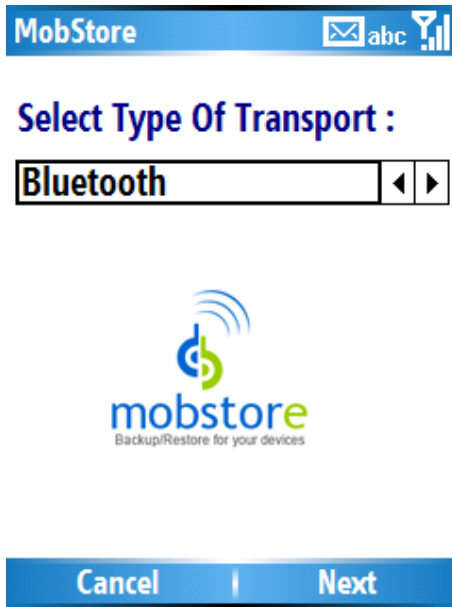


Fig 2: Select Transport

Select the device to which connection is to be established.

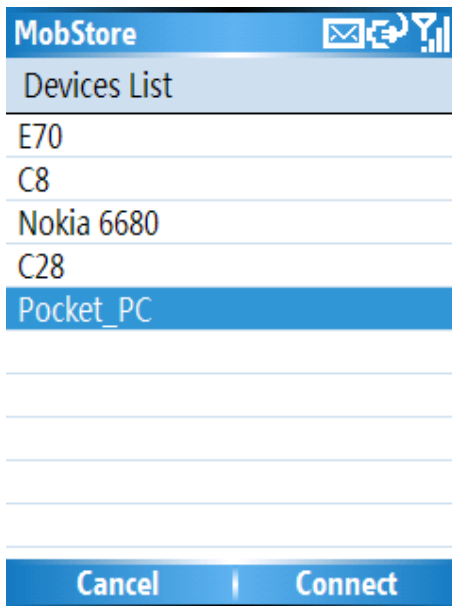


Fig 3: Bluetooth Device List

Once connection has been established and accepted at the server end, a list of all available backup's at the server end will be displayed.

The first list will contain IMEI numbers of all clients who had connected and taken backup on this server.

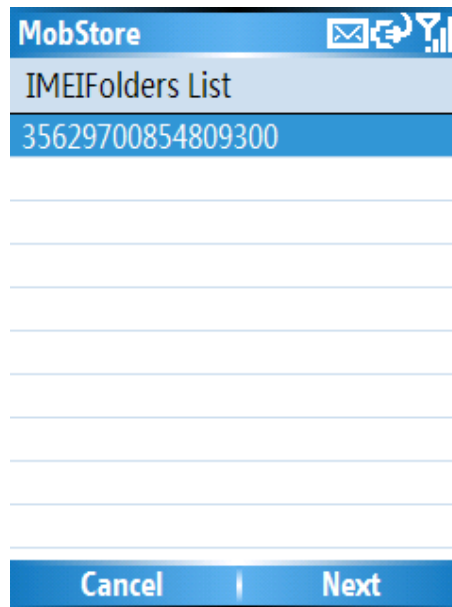


Fig 2: IMEI List(Backup clients IMEI number)

The user can select the backup folder from which data is to be restored based on IMEI number. Once the user selects the IMEI number, a list would appear which would contain all backup folders for that particular IMEI number. The naming convention of these folders is based on date and time when backup was taken. If the same client had taken multiple backup's , those many folders will be listed.

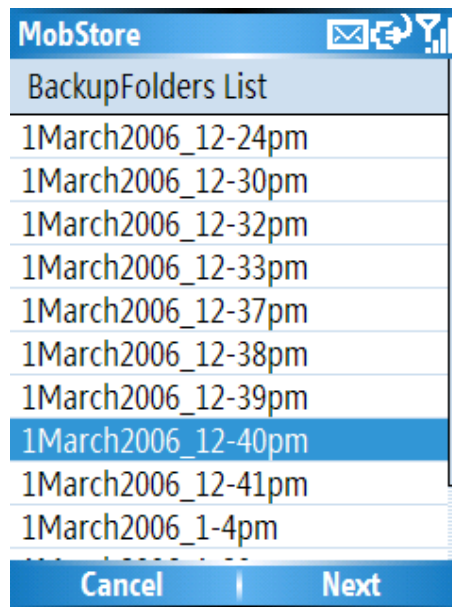


Fig 3: Folder List

Now all items which were backed up in that folder will be displayed to the user. In the sense if the user had taken backup of only "Contacts" and "Calendar", only those two items will be listed in the next screen.

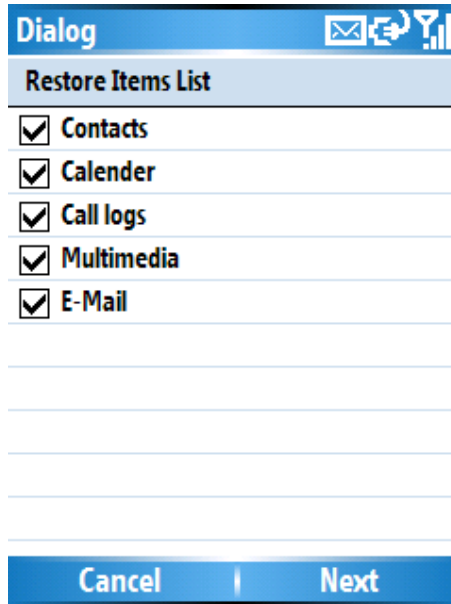


Fig 4: Restore up items list

Now the user has to select the items to be restored and accordingly data will be restored in the respective databases. In case of multimedia, the files will be placed in the same path as from where it was backed up. If a file already exists by the same name, the new file will be named as "Copy of". A progress bar will be displayed giving the status of the restore operation.



And also in case of "Call Logs" we cannot write into the database so we display the call logs items in the application itself.

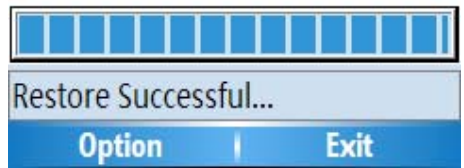
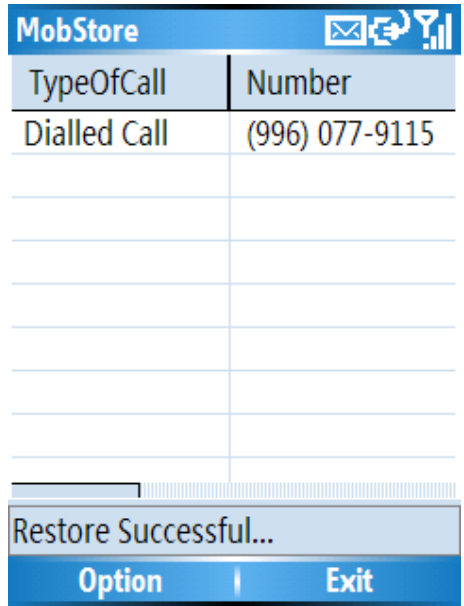


Fig 5: Progress Bar

Note : Based on the amount of data being restored and device capabilities, appropriate time would be taken for the restore operation to complete.

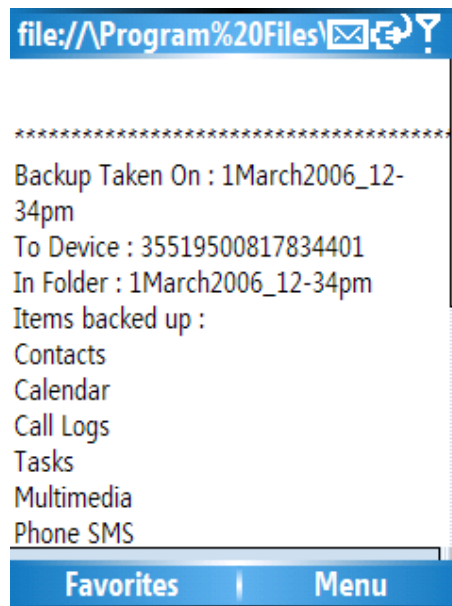
2.1.5 Uninstalation

MobStore provides the user with the option of uninstalling the application from the application itself. Uninstalling the application means all the components related to MobStore would get deleted. Also all folders created as a result of backup's taken by other devices would also be deleted. In other words all components and data related to MobStore would be deleted and the user would have to do a fresh installation to be able to use the application again.






2.1.6 History

This is an added feature available to the user, wherein the user can view the history of all backup's taken or restored. Details like date and time of backup taken or restored, IMEI number of device to which backup was taken or restored from, items (contacts, calendar, tasks etc) which were backed up or restored.



2.1.7 About Us

"MobStore" is a product developed by "GreyMatterIndia Technologies Pvt Ltd"

About Us   



MobStore Version 1.0

Copyright (C) 2007.

GreyMatterIndia Technologies Pvt Ltd.

www.greymatterindia.com

For SmartPhone Windows Mobile 5.0 Device

OK |